

# unifrog

---

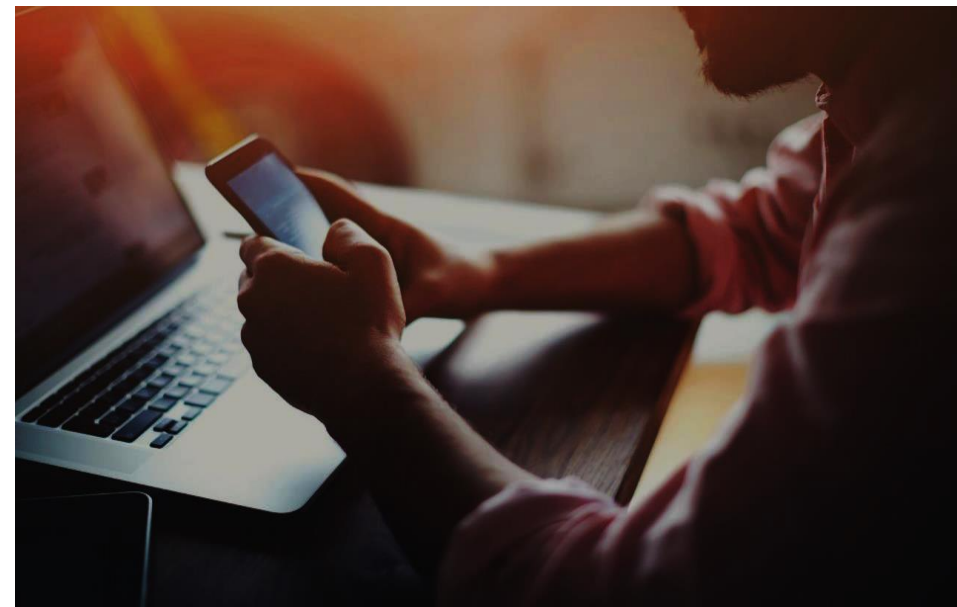
## Student launch –KS4

- Tomorrow, you will receive an email from Unifrog with your log in details.
- Please listen to the information shared during AM reg today.
- Then, follow the link from Unifrog in your email to register your account.



# Creating your account

- A link has been sent to your school email address (please check your junk/spam mailboxes).
- Click the link and follow the instructions.
- Create a memorable password.
- Make a note of your password.



# Complete the signup page

Enter your school email address that you access frequently.

### Signup page

To create your own account, please fill in the following form.

* Form code	<input type="text"/>
* Title	---- select your title ----
* First name	<input type="text"/>
* Surname	<input type="text"/>
* Email address	<input type="text"/>
* Retype email	<input type="text"/>
UK postcode	Optional if your school is international
* Password	<input type="password"/>
* Retype password	<input type="password"/>

Your school hasn't joined yet? If you'd like it to, please [contact us](#).

# Every time you login to Unifrog from now on, sign in here

If you forget your password, hit the link to reset (remember to check your junk/spam just in case!)

## Sign in

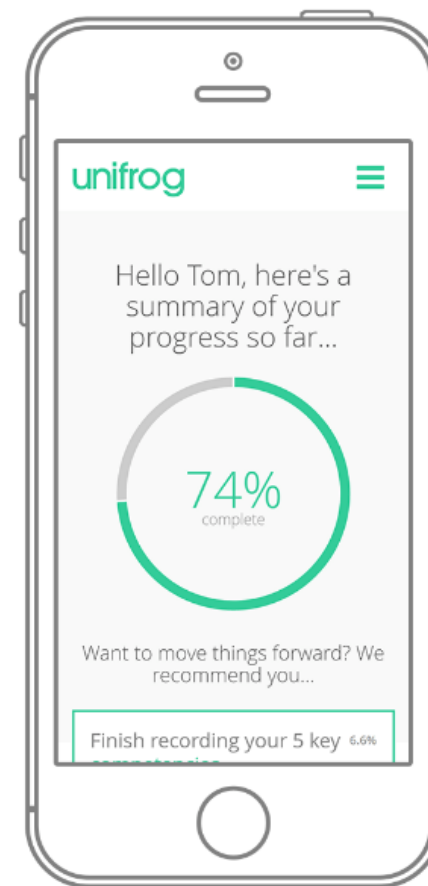
Been given a Form Code?  
[➤ Sign in for the first time](#)

Teacher or Referee?  
We've combined the sign-in pages! Please use this page to log in as normal.

# In summary

- Unifrog can help you make decisions now about your college and sixth form choices and what you want to study.
- Later, it will help you choose the university or apprenticeship that's right for you.
- Be smart. Get ahead of the game!

**Sign in now at [unifrog.org/sign-in](https://unifrog.org/sign-in)**



# unifrog

Sign in at:

[unifrog.org/sign-in](https://unifrog.org/sign-in)